



Cable Park

Anchored by Ross, Goodwill, and Grocery Outlet

8801 - 8889 Greenback Lane
Orangevale CA 95662
www.cbre.com/sacramentodt

Retail | For Lease

CBRE

Cable Park Shopping Center

8801 - 8889 Greenback Lane | Orangevale, CA 95662

Property Highlights

Join Grocery Outlet, Ross, and Goodwill

Located on the busy corner of Greenback Ln (36,377 ADT) and Hazel Ave (31,152 ADT) the center offers exceptional visibility

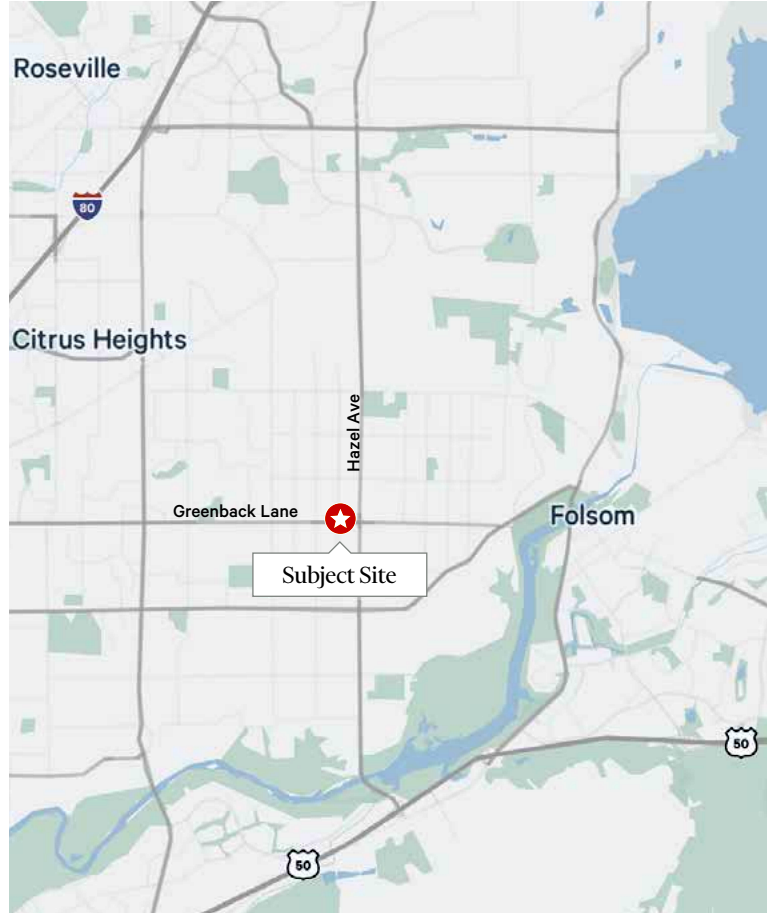
Over 1.3M visits to Cable Park Shopping Center in 2023

True trade area includes nearby communities of Citrus Heights, Folsom, and Fair Oaks

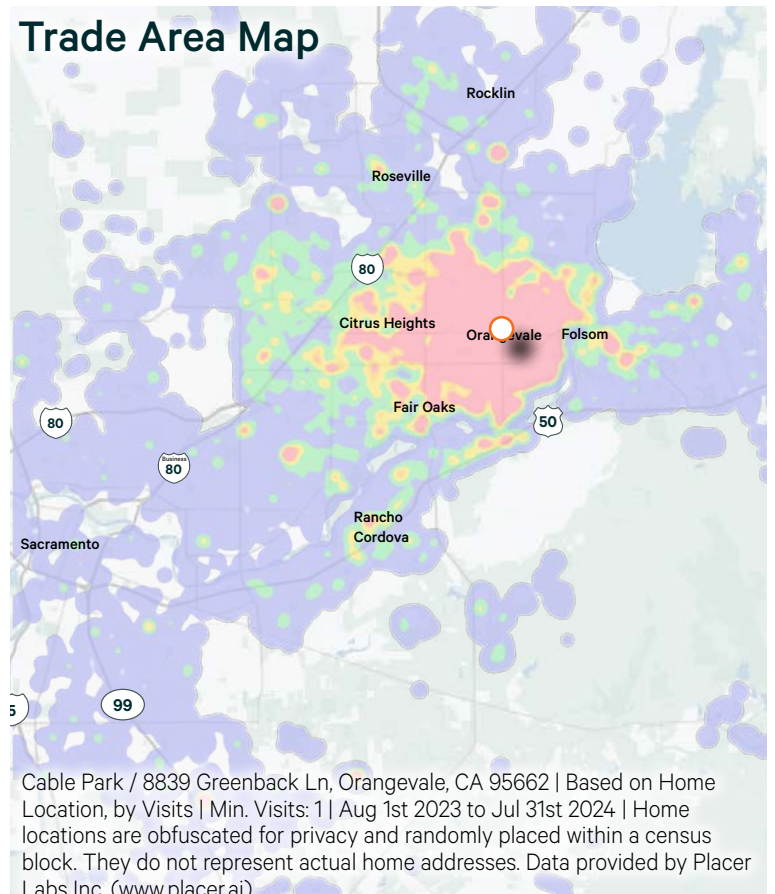
Surrounded by affluent, established residential areas

Shop spaces and anchor space available

Monument signage available








Trade Area Map



Cable Park / 8839 Greenback Ln, Orangevale, CA 95662 | Based on Home Location, by Visits | Min. Visits: 1 | Aug 1st 2023 to Jul 31st 2024 | Home locations are obfuscated for privacy and randomly placed within a census block. They do not represent actual home addresses. Data provided by Placer Labs Inc. (www.placer.ai)



2024 Estimate Demographics*

	Radius	1-Mile	3-Miles	5-Miles
	Population	13,230	98,874	259,660
	Daytime Population	10,170	84,502	253,435
	Businesses	400	3,581	11,437
	Households	4,994	38,825	100,311
	Avg HH Income	\$119,536	\$135,727	\$138,433

*Source: FastReport



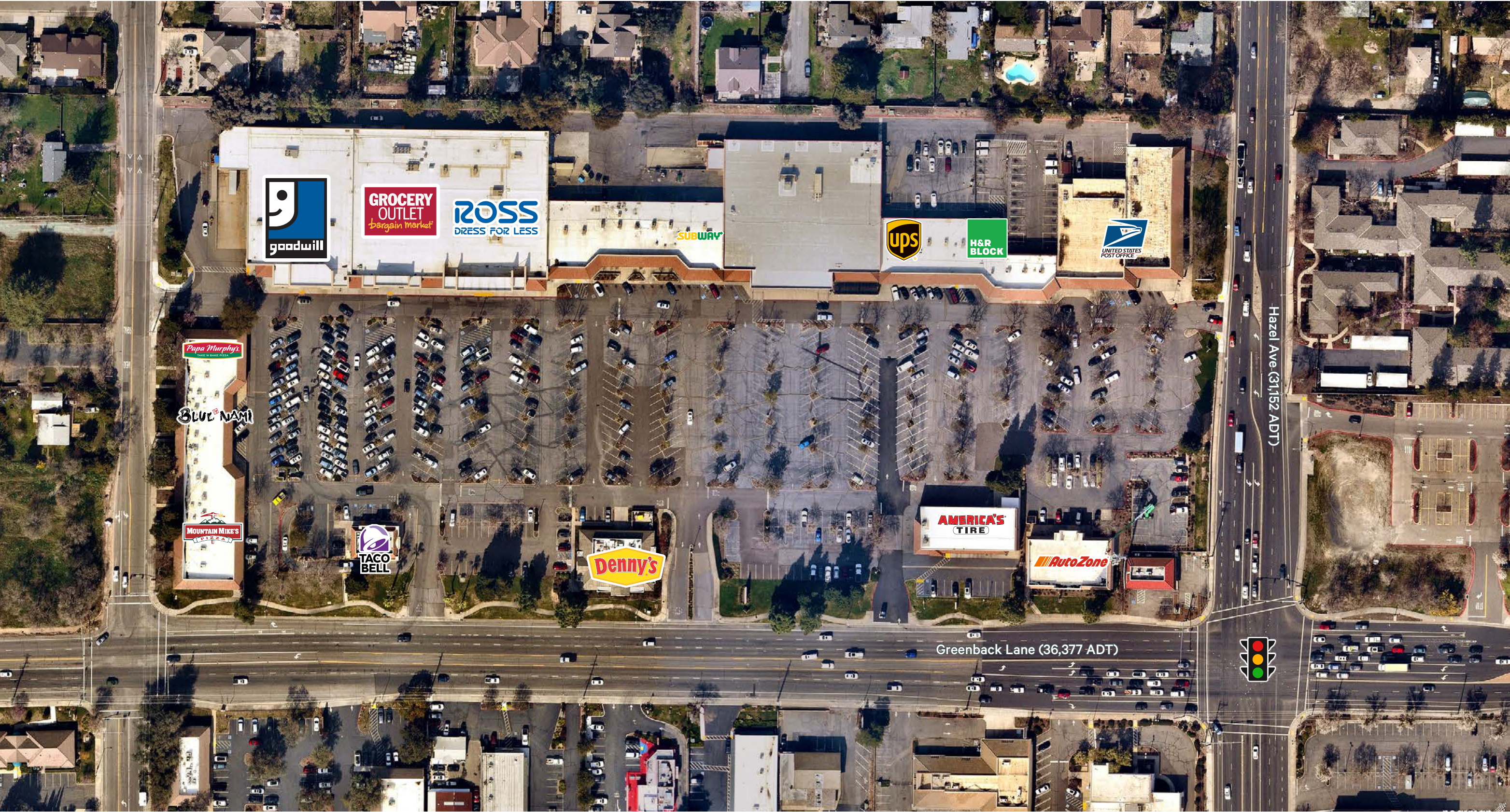
Site Plan

Not to scale. All dimensions are approximate.



Site Overview

Not to scale. All dimensions are approximate.



Cable Park Shopping Center

8801 - 8889 Greenback Lane | Orangevale, CA 95662

For Lease



Contact Us

Chris Campbell

Executive Vice President
+1 916 446 8760
chris.campbell@cbre.com
Lic. 01204114

Jason Read

Senior Vice President
+1 916 446 8273
jason.read@cbre.com
Lic. 01341972

Scott Carruth

Senior Vice President
+1 916 446 8717
scott.carruth@cbre.com
Lic. 01372285

© 2025 CBRE, Inc. All rights reserved. This information has been obtained from sources believed reliable but has not been verified for accuracy or completeness. CBRE, Inc. makes no guarantee, representation or warranty and accepts no responsibility or liability as to the accuracy, completeness, or reliability of the information contained herein. You should conduct a careful, independent investigation of the property and verify all information. Any reliance on this information is solely at your own risk. CBRE and the CBRE logo are service marks of CBRE, Inc. All other marks displayed on this document are the property of their respective owners, and the use of such marks does not imply any affiliation with or endorsement of CBRE. Photos herein are the property of their respective owners. Use of these images without the express written consent of the owner is prohibited.